

## 风撑技术改进说明

### Wind bracing technology improvement instructions

一、新款较老款在结构和性能上有很大的提升：

The newer and older models have a great improvement in structure and performance.



老款 The old one



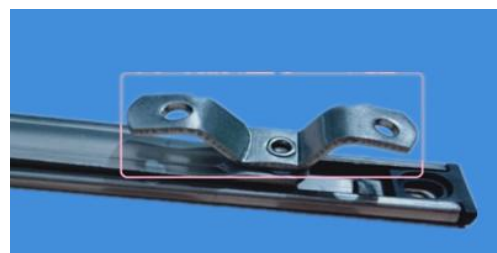
新款 The new one

二、新款较老款折弯处加长加高

The newer and older models have longer and higher on bends part



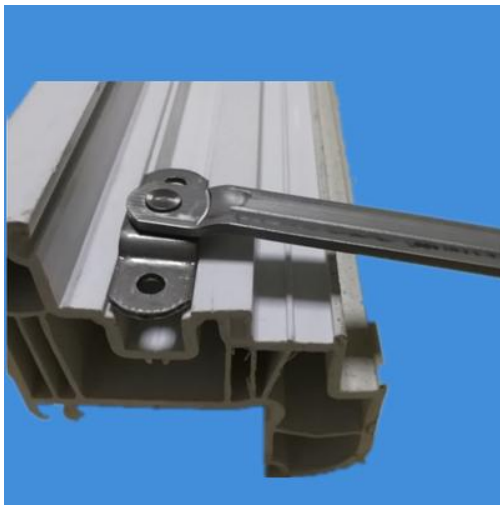
老款 The old one



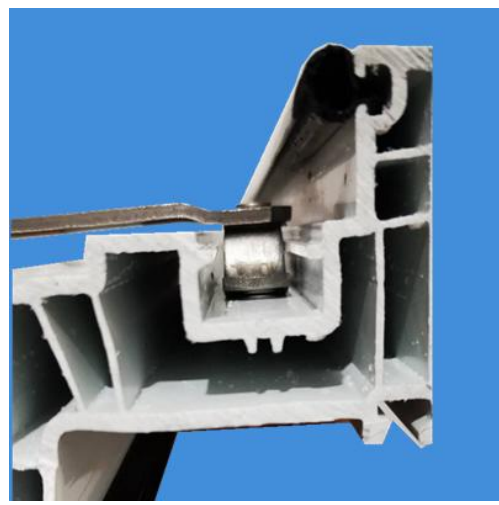
新款 The new one

三、优势：避免了老款安装时槽口处螺丝容易打歪的问题，以免耽误工时等！新款可直接安装在型材槽口底槽内，操作更便捷,省时省工！

Advantage: To avoid the problem that the screws at the notch are easily distorted during the installation of the old models, so as not to delay the working hours!The new model can be installed directly in the bottom of profile groove, More convenient operation, saving time and effort!



老款 The old one



新款 The new one