

铝合金加重合页技术改进说明

Description of technical improvement of aluminum alloy weighted hinge



老款 The old one



新款 The New one

新款合页相较于老款合页，无论在结构还是性能上面都有很大的提升。
Compared with the old hinge, the new hinge has a great improvement in structure and performance.

一、结构方面

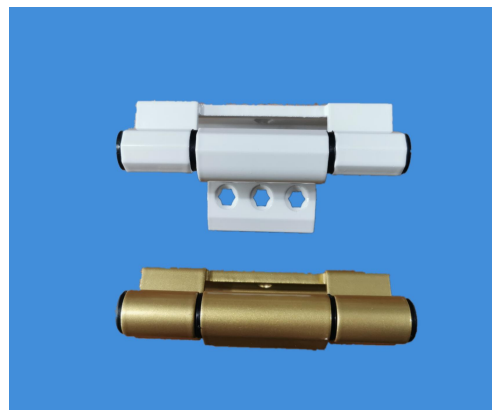
Structural aspects

- 1、新款外轴为方轴，看起来更美观

The new outer shaft is a square shaft, which looks more beautiful

- 2、新款内轴加长 5 个毫米，增加了合页的承重

The new inner shaft is 5 mm longer, which increases the load bearing of the hinge

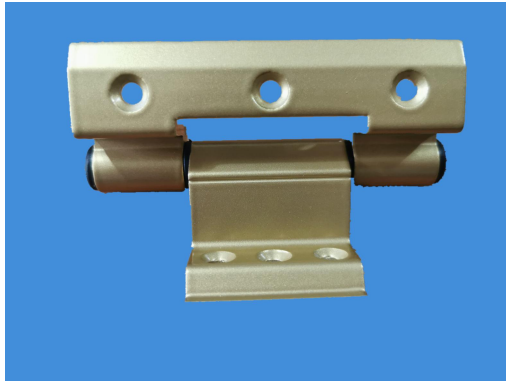


二、.凹槽设计

Groove design

1、凹槽设计可将型材壁嵌入合页，使型材与合页咬合更紧密，增加合页承重

The groove design can embed the profile wall into the hinge, so that the profile and the hinge can be closer to each other, and increase the hinge load



老款 old style



新款 The New

2、框上与型材接触位置加大了支撑面积，增加承重力

The contact position of the frame with the profile increases the support area and increases the bearing capacity



老款 The old one



新款 The New one